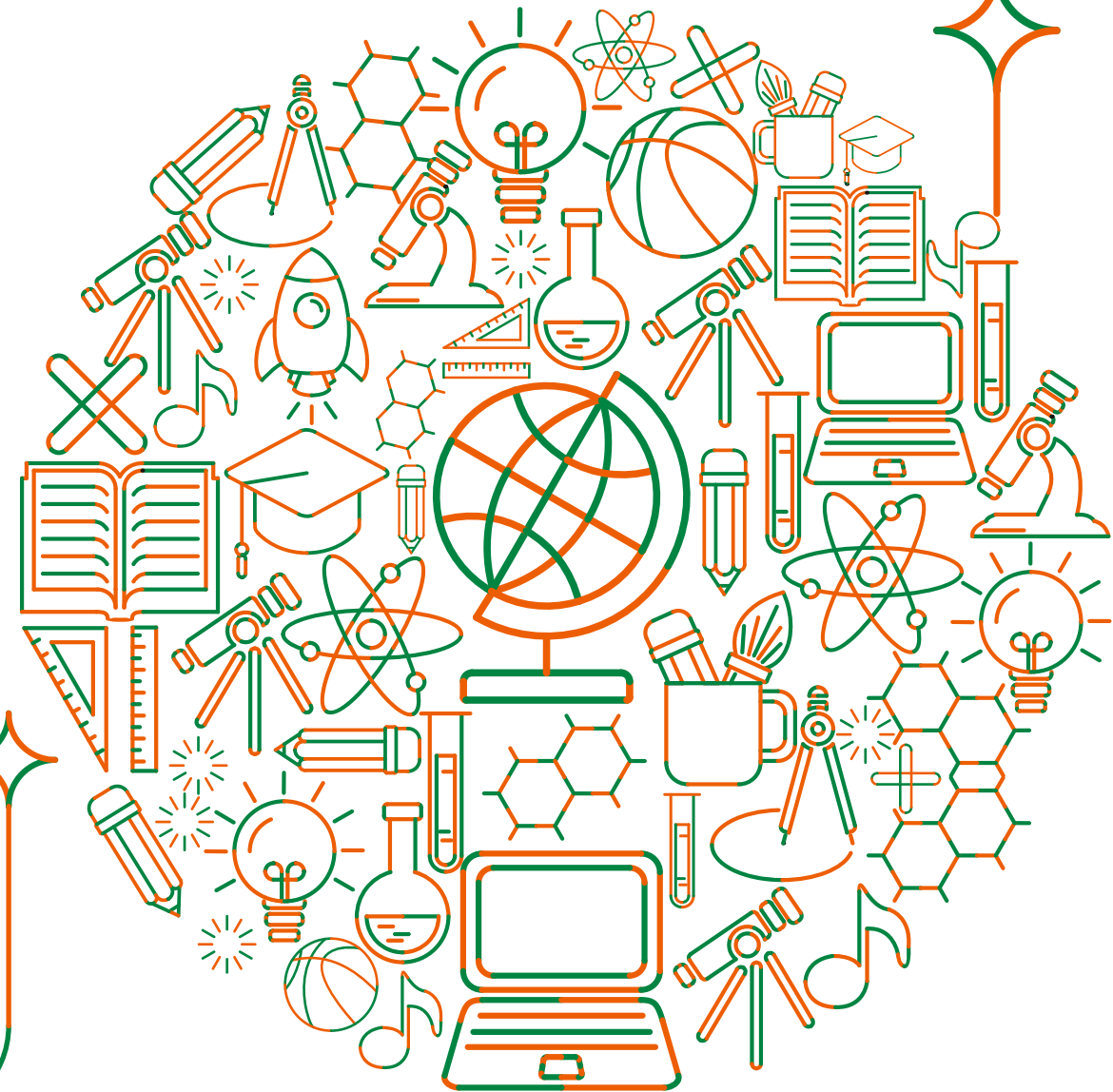


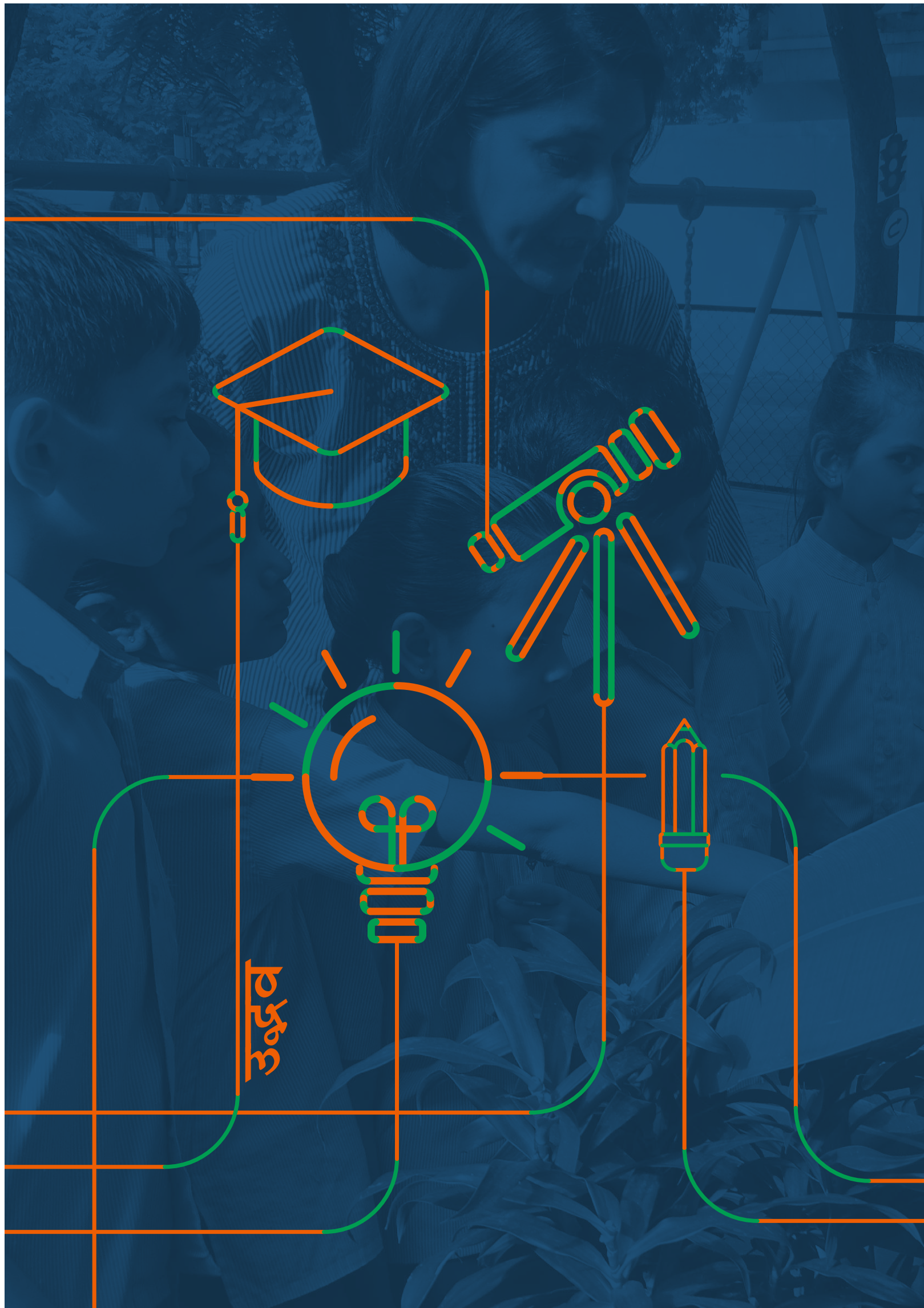


Ujjval World School, Near Kadugodi Bus Stand,
Whitefield Post, Bangalore-560066.

Ph: 080 - 28454466
Email: contactus@ujjvalworldschool.org
www.ujjvalworldschool.org

stroke&arrow





THE JOURNEY

The school is run by **Ujjval Vidyalaya Education Society,**

Origin and History of Ujjval Vidyalaya

Ujjval Vidyalaya was registered under the Karnataka Societies Registration Act, 1975 vide Registration No. 128/75-76 dated 30th July 1975

The Trustees:

- Mrs. Malika C. Amin
- Mrs. Barkha P. Amin
- Mr. Udit Amin
- Mrs. Tishya Amin
- Mr T. Balaraman
- Mr. Nitin Bhave
- Mr. Rasesh Shah

The trust believes in a no compromise, complete education for children. It works under a strong belief to provide a happy, nurturing environment for development by forming a strong partnership with parents to ensure that the children reach their full potential.

The trust is established under the aegis of Alembic Pharmaceutical Limited.

Established in 1907, Alembic Pharmaceutical Limited is Asia's most respected and integrated pharmaceutical company, committed to improving the quality of life and healthcare in over 75 countries around the world.





THE SCHOOL

Ujjval World School, established in 2019 is a humble tribute of Alembic Limited to her vision for the city of Bengaluru.

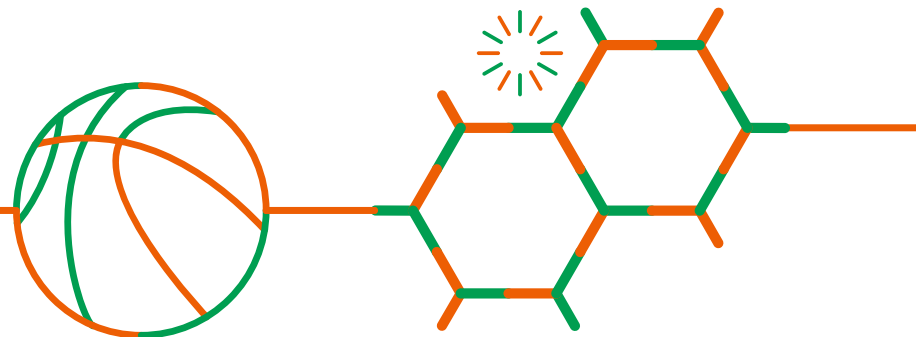
Ujjval World School is a full-fledged co-educational English Medium School (Nursery to Class 12), affiliated to the Central Board of Secondary Education, New Delhi. It is located on a sizeable campus in Whitefield, Bengaluru. This modern amenity offers ample space and facilities to give every student the freedom to explore and create their own domain of learning.

Ujjval World School has a big multipurpose playground, where students are encouraged to play a variety of sports like Cricket, Football, Volleyball, Handball, Basketball, Skating and Athletics. The school provides a separate playground for pre-primary children with age appropriate equipment.

Extracurricular activities like Art, Craft, Yoga, Music and Dance are an integral part of the school curriculum with dedicated rooms to facilitate diverse interests.

The modern, well-equipped science laboratories are user-friendly and provide important support to the curriculum. The school also has a composite science laboratory and mathematics laboratory to cater to the curriculum needs of Middle School. The school has an indoor gym, an indoor auditorium & a multipurpose room which serves as a gateway for yoga, dance and other such extracurricular activities. The school has also invested in a state of the art computer lab, a well stocked library with a huge reference section of encyclopedias and reference books, magazines and publications for research purposes.

“ At Ujjval World School, we believe that every child is unique and every family is important. We seek to provide an opportunity where children discover their own unique identity and develop to their fullest.”



Learning
ABC, ABC (pg no. 2)
Outdoor
AV Time - Pre-school
power 1
S.T. - An object
which starts with
S

ACADEMICS

Our curriculum is learner-centered, embracing multiple intelligence and diverse learning styles. Our modules are developed in a 'hands on' way to accomplish the total learning goals in different subject areas.

An important component of the syllabus is our Integrated Curriculum. This comprises of units which allow our students to gain a deeper understanding of topics and concepts studied, and to come to a better understanding of the connections between subject areas.

Our regular curriculum is further enhanced with an extensive extra curricular programme which includes opportunities for sports, art & craft, music, dance & dramatics. The purpose and function of this learner-centered approach is to apply knowledge and skills to deal with the day to day challenges of life.

EVALUATION

Evaluation is a continuous and comprehensive process and goes on throughout the teaching year and not only at the end of the term or year. The process of evaluation is not intended to make pronouncement on the child's abilities or on the effectiveness of the teaching practices. However, it is an important tool for parents to be aware about their child's academic performance. When parents join hands with the school in the learning process, the child always benefits.

उत्तीर्ण

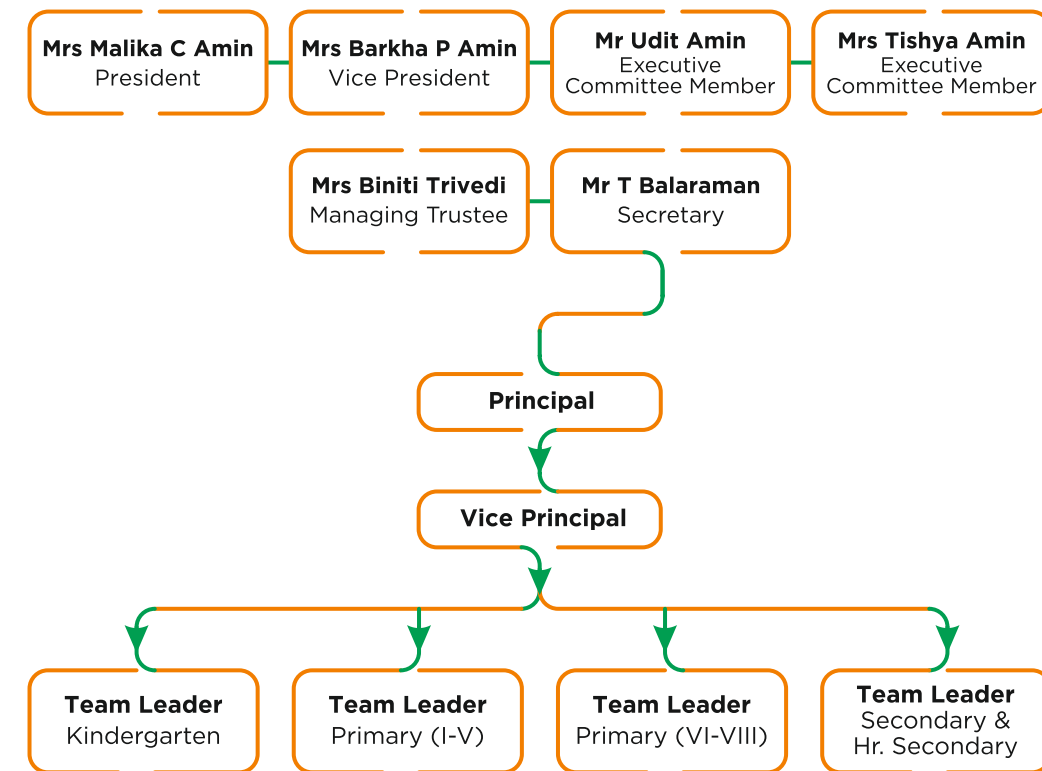




PARENTS AS PARTNERS

We firmly believe that student success is built on a strong partnership between parents and teachers. We believe that when we work together our children benefit. It is our intent to give parents what they deserve for their children - THE BEST!

THE TEAM





The logo symbol uses the first alphabet of Ujjval in both English as well as Hindi. The school being a world school imparts international quality education, yet is connected to its Indian roots and ethos.

Two human figures emerge from the 'U' each representing - orange for creativity & vibrancy and green for growth & development respectively.

The dark blue color used for Ujjval typeface as well as the 'U' represents discipline, organisation and a professional approach.

